

CC-105 ION SOURCE

BROAD BEAM COLD CATHODE ION SOURCE.

THE CC-105 BROAD BEAM COLD CATHODE ION SOURCE IS DESIGNED FOR ION-ASSISTED EVAPORATION PROCESSES.

SAMPLE PREP
✓ R & D
✓ BATCH PRODUCTION
IN-LINE PRODUCTION

✓ EVAPORATION
SPUTTERING
PECVD

MADE IN THE U.S.A. SINCE 1964

CC-105

THE DENTON DIFFERENCE **YOUR PROCESS IS OUR PROCESS**

We collaborate with you to design a system that solves your exact thin film coating process needs. When we ship you a tool, it's production ready.

- Our systems scale to meet your production requirements
- We believe in customers for life
- Worldwide support network

AT DENTON WE CARE ABOUT YOUR SUCCESS

- PROFESSIONAL INSTALLATION AVAILABLE
- PERSONALIZED TRAINING AVAILABLE
- REAL-TIME SUPPORT
- CE/UL/CSA COMPLIANT SYSTEMS



MADE IN THE U.S.A. SINCE 1964

www.dentonvacuum.com

CC-105

RETROFITS EXISTING EVAPORATION SYSTEMS

EXPANDS THE CAPABILITIES OF A MAJORITY OF THE EVAPORATION SYSTEMS ON THE MARKET BY ADDING IAD CAPABILITIES.

MANUAL OR INTEGRATED OPERATION

THE CC-105 POWER SUPPLY CAN EITHER INTEGRATE INTO THE SYSTEM CONTROLS FOR AUTOMATIC OPERATION OR REMAIN INDEPENDENT FOR MANUAL OPERATION.

LOW OPERATING PRESSURES

THE CC-105 OPERATES IN SYSTEMS WITH O₂ PUMPING SPEEDS AS LOW AS 800 LITERS/SECOND.

IMPROVED ADHESION

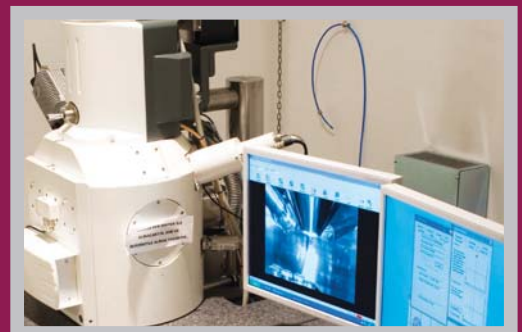
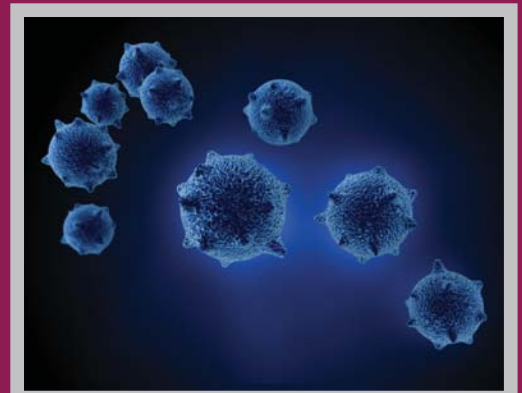
IN-SITU CLEANING OF THE SUBSTRATE IMPROVES ADHESION OF THE MATERIALS.

TYPICAL APPLICATIONS

- PRECLEAN
- AR PRECLEAN
- METAL OXIDE PROCESSING
- HYDROPHOBIC MATERIALS
- REACTIVE PROCESS WITH OXYGEN
- REACTIVE PROCESSES WITH NITROGEN

FEATURES

- UNIFORM FILM STOICHIOMETRY
- HIGH ION CURRENT DENSITY
- 100% O₂ COMPATIBLE
- BROAD BEAM
- COMPACT AND ECONOMICAL



CC-105

SPECIFICATIONS

| CC-105 SPECIFICATIONS |
|--|
| ION SOURCE SPECIFICATIONS |
| APERTURE: 37 MM |
| GASES: O ₂ , Ar, N ₂ |
| ION DRIVE CURRENT: 0-3.5 A |
| ION ENERGY: 50-800 EV |
| ION SOURCE: 90MM/127MM |
| NEUTRALIZER: TUNGSTEN WIRE |
| ANODE POWER SUPPLY |
| OUTPUT VOLTAGE: +600 V PEAK |
| OUTPUT CURRENT: 4.4 A PEAK |
| ELECTRICAL CONNECTION: 190 264 V |
| SIZE: 429MM X 87.63MM |
| NEUTRALIZER POWER SUPPLY |
| OUTPUT VOLTAGE: -30 V |
| OUTPUT CURRENT: 30 A |
| ELECTRICAL CONNECTION: 190 264 V |
| SIZE: 429MM X 43.4MM |

specifications subject to change without notice



TOLL FREE:800-666-6004 • PHONE:856-439-9100
EMAIL: info@dentonvacuum.com
www.dentonvacuum.com

SUPPORT EMAIL: support@dentonvacuum.com
PARTS AND SUPPLIES: store.dentonvacuum.com